



# Contents

<b>Three types of screens</b> .....	2
Drive screens .....	4
Charge screens .....	8
Parked screens .....	10
<b>Settings screens</b> .....	11
<b>Alerts</b> .....	15



## Three types of screens

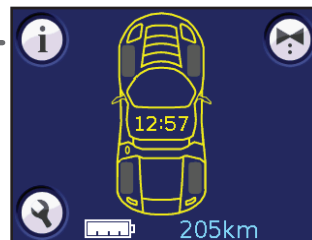
Different types of screens are displayed when the vehicle is charging, driving, or parked:

- **Charge screens** are displayed when the **charge port door is open**.
- **Parked screens** are displayed when the **vehicle is on** and the **handbrake is engaged**.
- **Drive screens** are displayed when the **vehicle is on**, the **handbrake is not engaged**, and the **charge port door is closed**.

### Parked

#### Information

Display vehicle information such as VIN, tire pressures, fuel saved, and more.



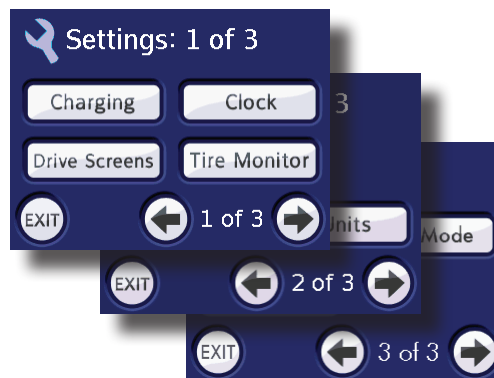
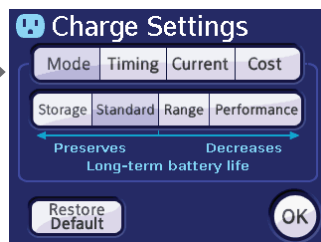
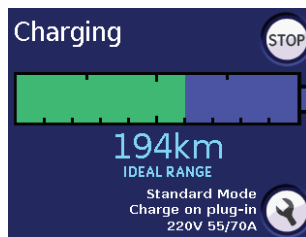
#### Valet mode

### Settings

Use Settings screens to customize various vehicle behaviors and Touch Screen features. You can set a security PIN, define acceptable tire pressures, specify which drive screens are displayed, change how units are displayed, and more. See pages 11-14 for details.

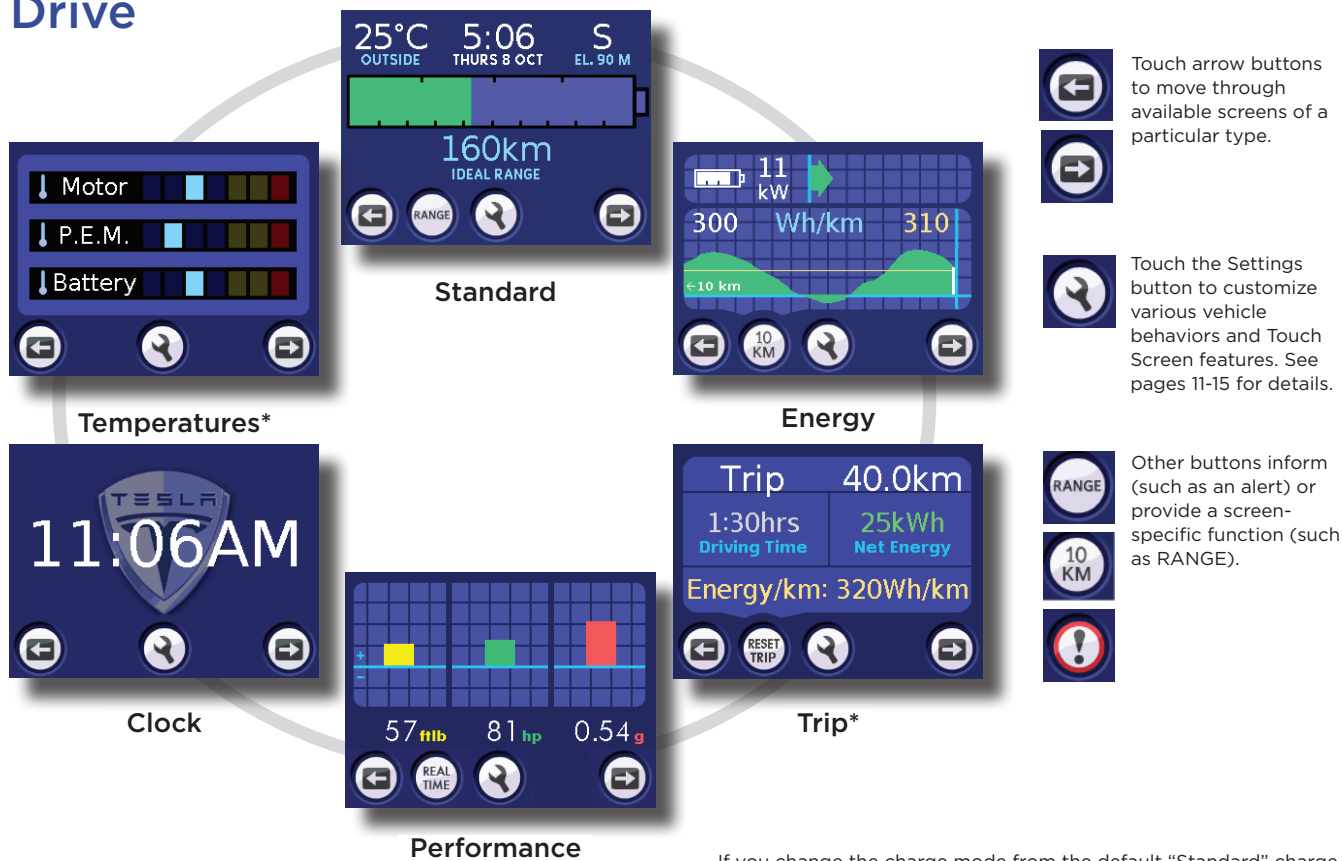
### Charge

The Charge screen displays charging status. You can also access charge settings from this screen. For details on charge settings, see pages 8-9.





## Drive



**\*Not all Drive screens are displayed by default.** You can control which Drive screens you want displayed. See page 12.

If you change the charge mode from the default "Standard" charge, one of the symbols below is displayed in the top right corner of all Drive screens (and in the bottom center of the main Parked screen):

**R** Range

**P** Performance

**S** Storage





## Drive Screens

### Up to 6 drive screens

When the vehicle is on, the handbrake is not engaged, and the charge port door is closed, the Touch Screen displays up to six Drive screens. You can move through these screens using the arrow buttons:

- Standard
- Energy
- Trip\*
- Performance
- Clock
- Temperatures\*

The first screen you see when driving will be the one that was displayed the last time you were driving. **You can select the drive screens you want displayed—see Set Active Drive Screens on page 12.**

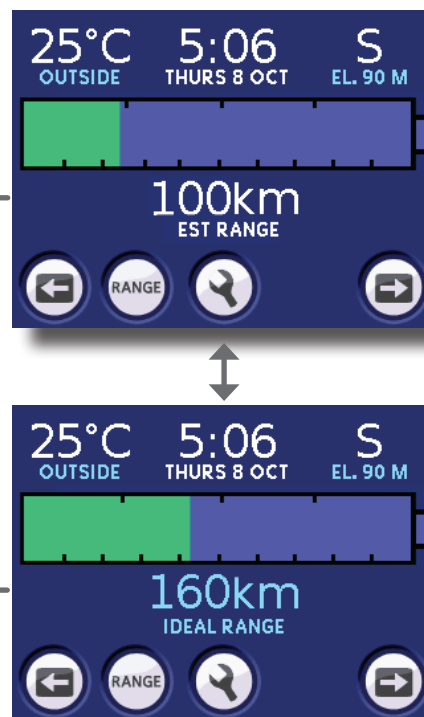
\*By default, the Trip and Temperatures screens are not displayed.

By touching the RANGE button, you can display the estimated remaining driving distance based on how you've been driving for the last 64 kms (or 40 miles) (EST RANGE) or based on an optimum distance that you can achieve if driving conditions are ideal (IDEAL RANGE).

You can display range in kilometers or miles by touching the Units button on Settings Screen 2. See page 13.

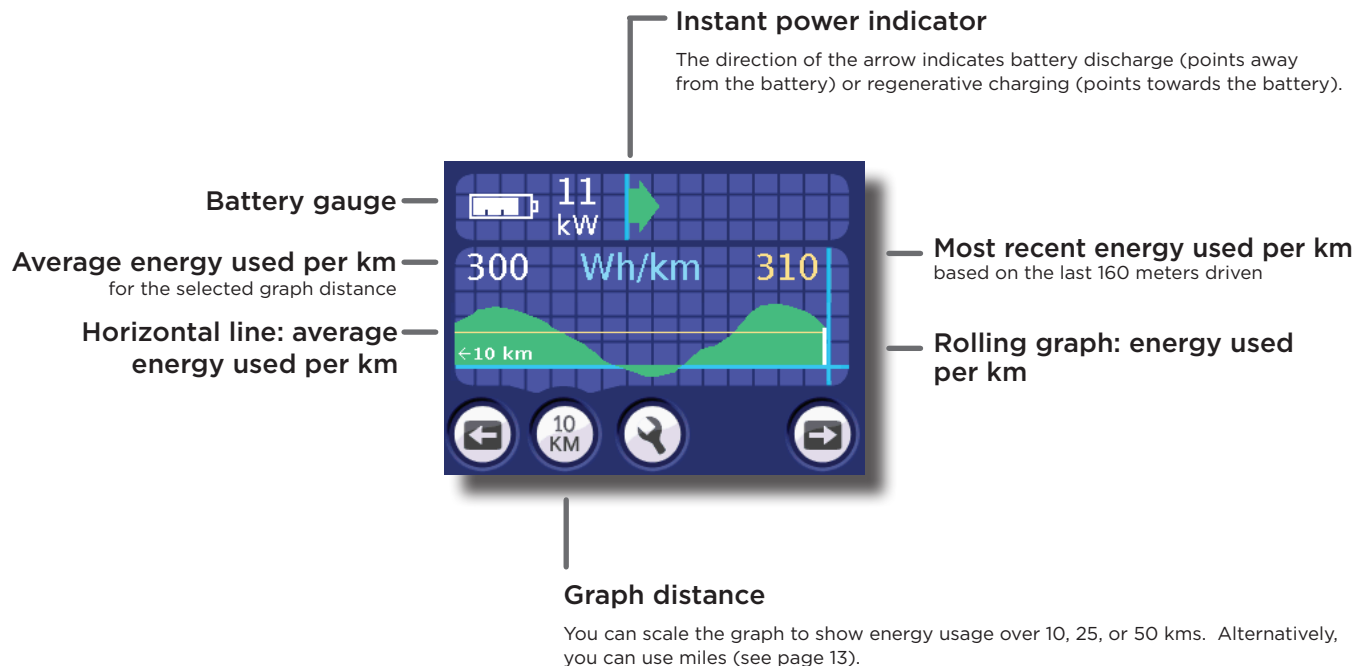
### Standard

The Standard screen provides an estimate of remaining driving distance based on the vehicle's current charge level. This screen also provides the outside temperature, date and time, the direction you're heading, and approximate elevation.



# Energy

The Energy screen displays the average energy in Wh (watt hours) used per km. You can display this average over 10, 25, or 50 kms.

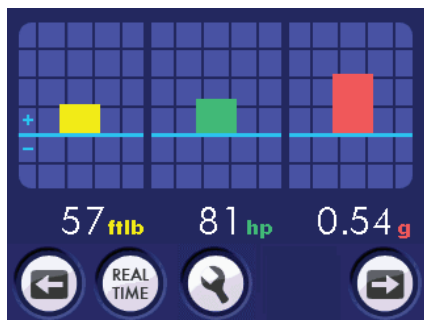




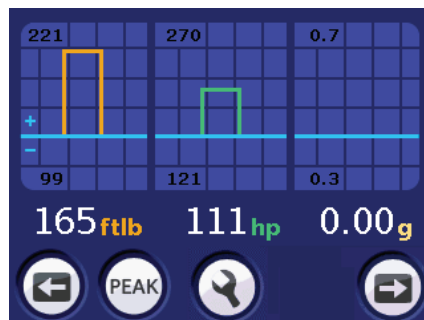
## Drive Screens

### Performance

Touch the REAL TIME/PEAK button to switch the display between two types of bar graphs. REAL TIME displays solid bars that represent the vehicle's current performance. PEAK displays outlined bars that represent maximums achieved so far in the current drive session since you first selected the PEAK performance screen.



Real Time



Peak

- Torque
- Horsepower
- Acceleration



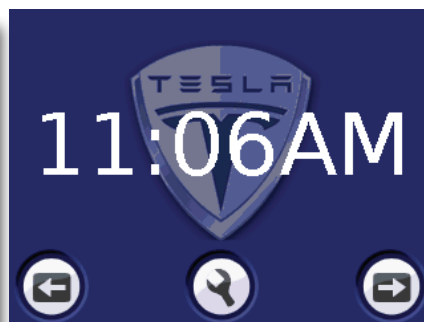


## Trip



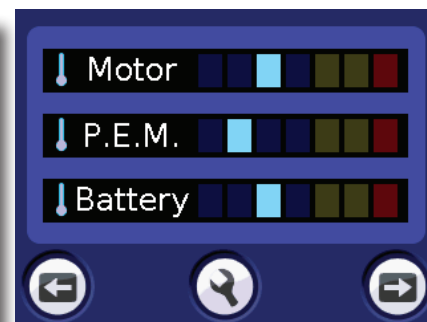
In addition to distance and accrued driving time, the Trip screen summarizes net energy used and energy used per km for the current trip. To reset these values, touch RESET TRIP on this screen or hold down the vehicle's trip odometer button (located on the steering column behind the starter switch). Touching the RESET TRIP button also resets the Trip value displayed on the vehicle's instrument panel, and vice versa.

## Clock



See page 12 for information on how to reset the time. You can also display the time in 24 hour format.

## Temperatures



If the temperature of the motor, P.E.M. (Power Electronics Module), or battery is too high, the vehicle protects itself, and you will see an alert on the Touch Screen. Similar to a temperature gauge on a conventional vehicle, the Temperatures screen displays a visual temperature representation. Blue indicates a normal temperature, yellow indicates the subsystem is getting warmer than usual, and red indicates that the subsystem is hot. When a subsystem gets too warm, the vehicle protects itself by limiting power.



## Charge Screens

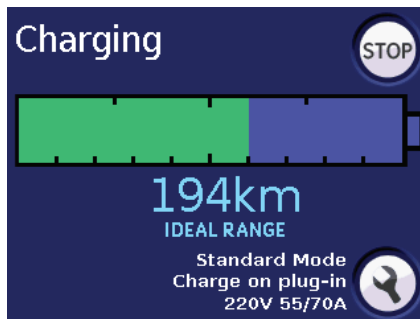
**When you open the vehicle's charge port door**, the Touch Screen displays the Charge screen. The Charge screen displays the charge status and the currently selected charge settings. It also displays the familiar battery graphic, driving range, and estimated battery level that is also displayed on the Standard Drive screen.

### Charge Status

The following messages inform you of the charge status:

- **Charging** - Normal charging is in progress.
- **Done Charging** - Charging is complete.
- **Topping Off Charge** - Automatic charging is in progress because the fully charged vehicle has been sitting for a while. To maintain a full charge, a plugged in vehicle periodically tops itself off.
- **Recovery Charging** - Recovery charging is in progress (after excessive discharge).
- **Charge Pending** - A charge is pending and will begin automatically. A charge is considered pending if the charge is scheduled to begin at some point in the future (see Timing on the opposite page) or when the battery is either warming or cooling to prepare for charging.
- **Stopped Charging** - Charging has stopped because either you have pressed the STOP button, or an error condition has occurred while charging. When you press START, or when the error condition has been cleared, charging will continue.

If you have entered a price for your electricity costs using the Charge Settings screens, the cost of the charge will be displayed on this line.

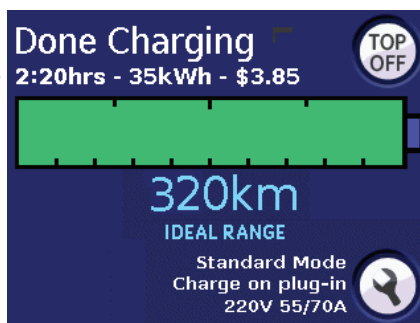


You can stop charging any time the vehicle is charging. You can also start charging when a charge is scheduled at a future time.

Touch to adjust charge settings.

These three lines display:

- Type of charge session (in this case, Standard)
- Timing of the charge (charging can begin either when the vehicle is plugged in, or at a specifically scheduled time)
- Voltage available from the electrical source (220V), amount of current being used (55 amps), and amount of current available (70 amps)



You can initiate "top off" charging manually.







Touch this button on the main Charge screen, on any Drive screen, or on the Main Parked screen to display the first Settings screen. Then click Charging to display the charge settings described below.

### Timing

You can schedule charging to begin at a specific time.

### Current

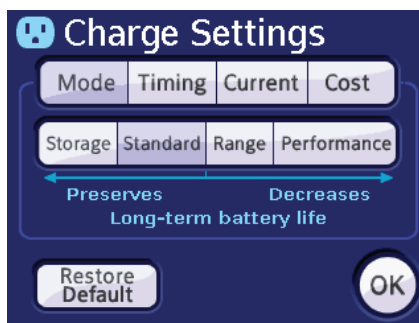
You can change the amount of current the vehicle draws when plugged in. The default current is set to the maximum available from the charge connector (if you've never charged at this location before), or the setting that you used last time you charged at this location.

### Charge Mode

The vehicle is set up to charge in Standard mode, which balances range and performance demands in favor of battery longevity. However, if desired, you can change the charge mode to:

- **Storage** - To preserve battery longevity, use this mode when the vehicle is plugged in and you plan to not drive it for two weeks or more. At this setting, the battery is maintained at a reduced charge level.
- **Range** - In addition to providing a higher level of charge, this setting allows the battery to be discharged to a lower level. It also limits the vehicle's power by 50% and maximizes driving distance.
- **Performance** - This setting provides faster acceleration under most circumstances, and allow the battery to be charged to a higher level.

**Note:** Using the Range and Performance charge modes impact battery longevity. For more information on the charge modes, refer to *Charging Your Vehicle*, provided in your owners package.



### Cost

Enter an appropriate kilowatts per hour cost to allow the Touch Screen to display the electricity cost at the end of each charge session. Refer to your home's utility bill to determine how much you are paying for electricity.

If you change the charge mode from the default "Standard" charge, one of the following symbols is displayed in the top right corner of all Drive screens and in the bottom center of the main Parked screen:

- S** Storage
- R** Range
- P** Performance

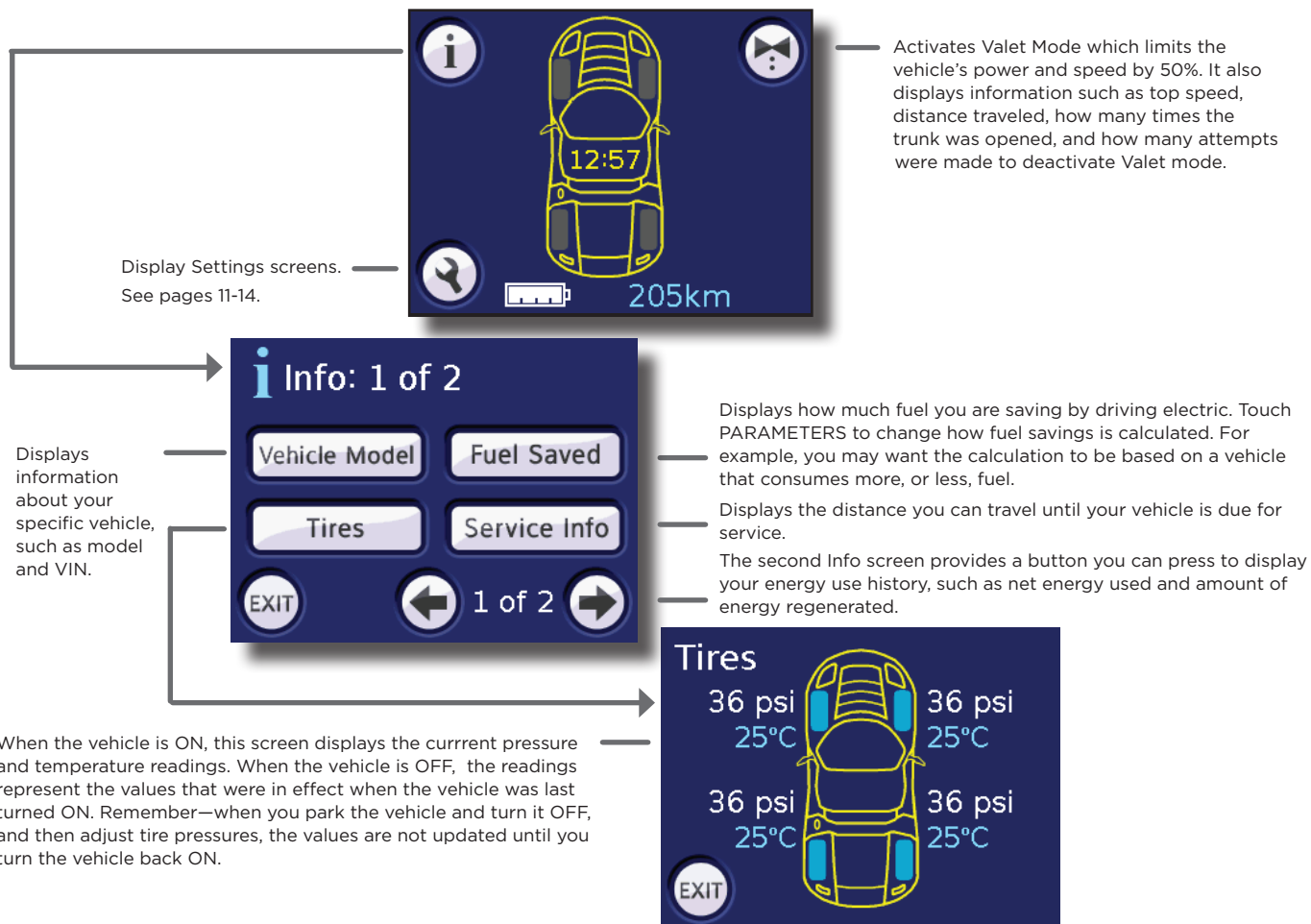
To preserve the life of the Battery, **the Range and Performance charge modes automatically revert** back to Standard after 72 hours, when the vehicle's charge port door is opened, or when the vehicle has been driven over 160 meters.





## Parked Screens

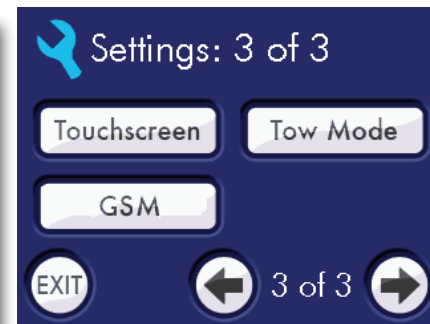
When the handbrake is engaged and the charge port door is closed, the Touch Screen displays the main Parked screen.



## Settings Screens



To display Settings screens, touch the wrench button located on the main Parked screen and on any Drive screen. Touch the arrow buttons to move through the three available Settings screens.

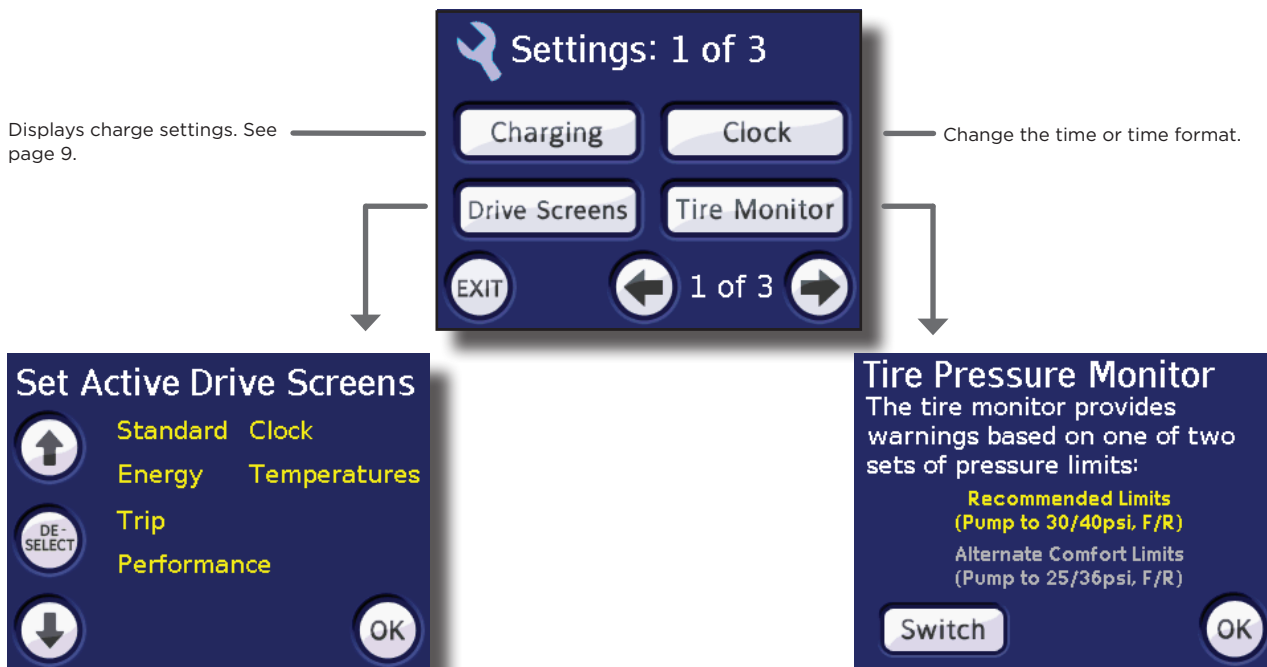


Use the Setting screens to change various vehicle behaviors and Touch Screen features. For example, you can change charge settings, specify the drive screens that are displayed, set a security PIN, and prepare your vehicle for safe transportation (see the Roadside Assistance Guide, provided in the owners package, for details on how to safely transport the vehicle).



## Settings Screens

### Settings Screen 1



Specify which drive screens you want to include in the rotation of drive screens (see page 2). Follow these steps to make changes:

- Use the arrow buttons to highlight the desired screen name.
- Touch DESELECT. The button name changes to SELECT and the drive screen name appears in grey.
- Touch OK.

#### Tire Monitor

The tire pressure monitoring system checks your tire pressure against pre-defined ranges. When a tire's pressure is below the range you select on this screen, the Touch Screen will display an alert.



## Settings Screen 2

The vehicle's security PIN activates or deactivates Valet Mode. You can change the security PIN code. If you have not set a security PIN, you will be briefly prompted to create one each time you start the vehicle.



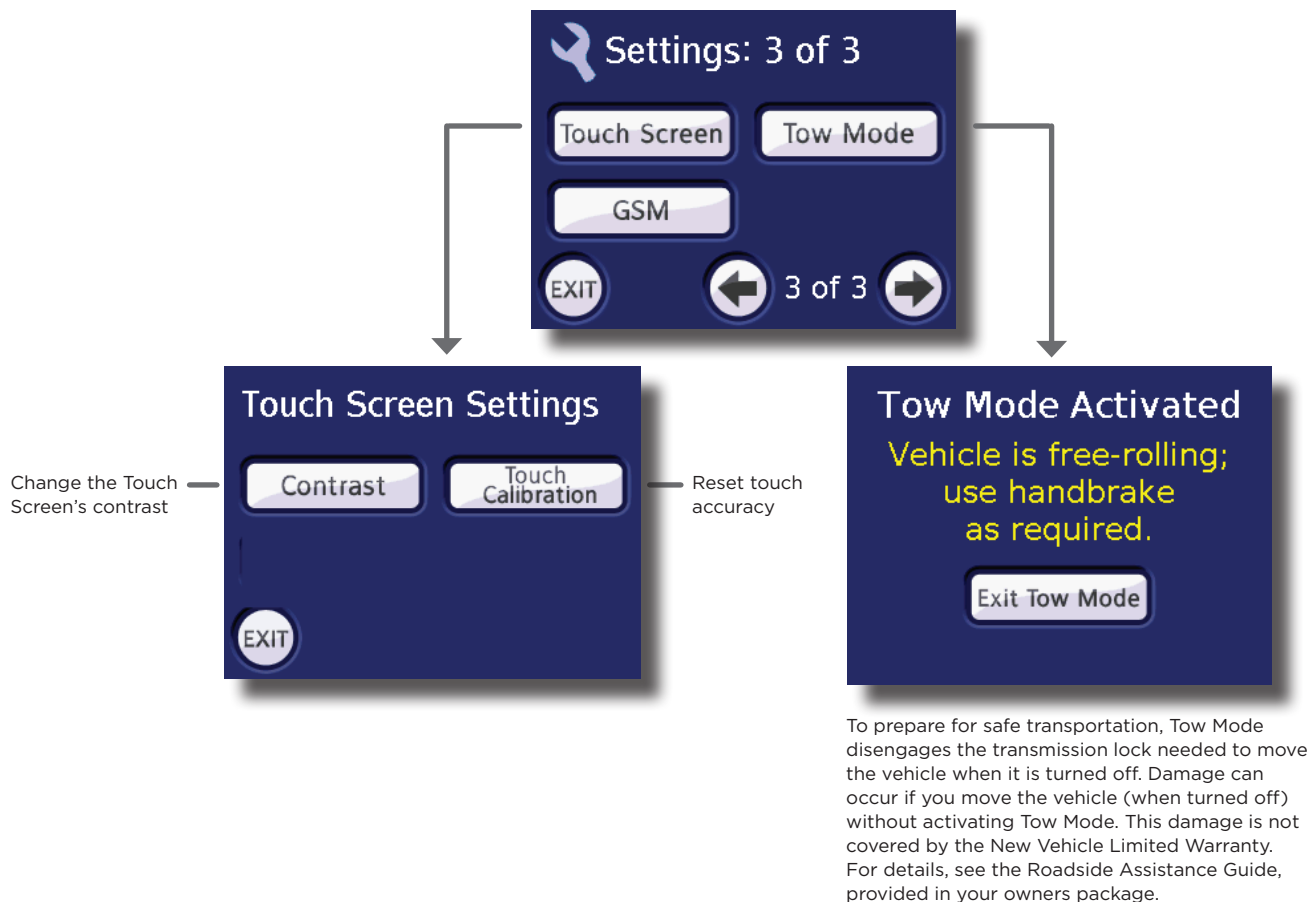
The Touch Screen can display distance, temperature, and altitude in standard or metric format.



If the third button on your key fob is not already set up to open the vehicle's trunk, you can program it to do so. Use the arrow buttons to move the flashing highlight frame to Trunk Release, then touch OK.



## Settings Screen 3





## Alerts

On occasion, the Touch Screen displays an alert.

Touch the screen to dismiss an alert.



If an alert remains active, this button will be displayed on most screens. Touch to re-display the alert.

